



PALM
BEACH

PERA

Salome

Table of Contents

Tech Specs & Contact p.2

Production Notes p.3

Production Photos p.4

Tech Run Sheet p.6

Line Set Schedule p.7

Prop Rental Inventory p.10

Costume Photos p.11

ORIGIN

Original Production by **Robert B. Driver** 10% royalty/\$1,000minimum
 Scenery Designed by **Boyd Ostroff** 10% royalty/\$1,000minimum
 Costumes Designed by **Richard St. Clair** 10% royalty/\$1,000minimum
 Scenery & Costumes constructed by **Opera Philadelphia**
 Scenery & Costumes Built in 1995
 Designed for Academy of Music Stage, Philadelphia PA
 Scenery Refurbished in 2000
 Costumes Refurbished in 2013

SET TECHNICAL INFORMATION

Number of Trucks **1 – 53'** [rail shipment not permitted]
 Number of Sets **1** [assembly & hanging hardware included in rental]
 Stage Dimensions **40' x 30' x 36'** [WxHxD]
 Line sets **23** [4-Scenery, 11-Masking (not included), 8-Electrics]
 Fly Height **32'**
 Technical Supervisor Required for Load-in & Strike Renter Provides
Daily Fee, Housing, Transportation & Per Diem

CREW REQUIREMENTS

	LOAD-IN	RUN	
Carpenters	8	2	
Electricians	10	4 [3sp]	
Props	4	2	
Fly-men	*1 [4]	1	*1 w/ 2 chain motors; 4 w/out

COSTUMES AVAILABLE

	WOMEN	MEN	
Principals	*5	11	*2 used for Salome + options
Supers	4	11	

Please direct Inquiries to:
Greg Hirsch **Managing Director**
 561-835-7547
 ghirsch@pbopera.org



CAST

Number of Principals 16

Number of Supers 15

PERFORMANCE TIMINGS

1hr 42min, no intermission

ARTISTIC STAFF

Conductor Roberto Paternostro

Director Renaud Doucet

Assistant Conductor Greg Ritchey

Assistant Director Fenlon Lamb

Lighting Designer Guy Simard

Hair & Make-up Designer Kathy Waszkelewicz

Accompanists Nana Valpa & Rebecca Mordo

English Supertitles Sonya Friedman

PRODUCTION STAFF

Director of Production Greg Hirsch

Production Stage Manager Martha Brett Finley

Costume Supervisor Brendan Van Stee

Props Supervisor Deborah Veres

Production Carpenter Skip Ford

Production Electrician George Benckenstein

Production Fly-man Jeffrey Whitehead

Supertitle Manager Katy Reeves

SCORE & ORCHESTRATION

Music & Libretto Richard Strauss

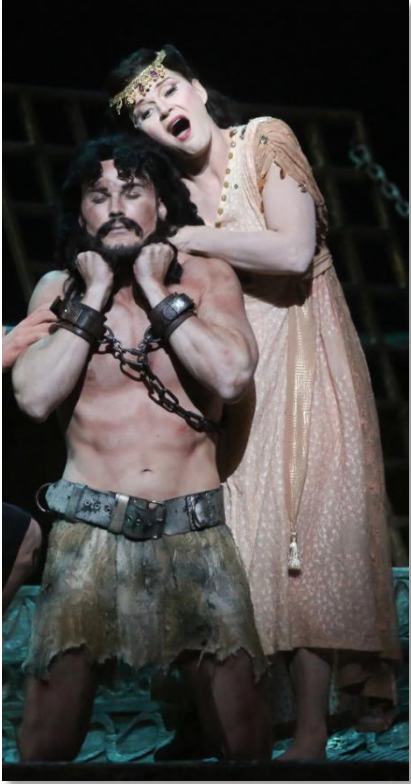
Publisher of Piano Vocal Score Boosey & Hawkes

Pit Musicians 83

*13 Violin I, 11 Violin II, 8 Viola, 8 Cello, 6 Bass, 3 Flute, 1 Piccolo, 3 Oboe, 1 English Horn
2 Clarinet, 1 Eb Clarinet, 1 Bass Clarinet, 2 Bassoon, 1 Bassoon/Contrabassoon, 5 Horn
4 Trumpet, 4 Trombone, 1 Bass Trombone, 2 Tuba, 1 Timpani, 3 Percussion, 1 Harp, 1 Celeste*



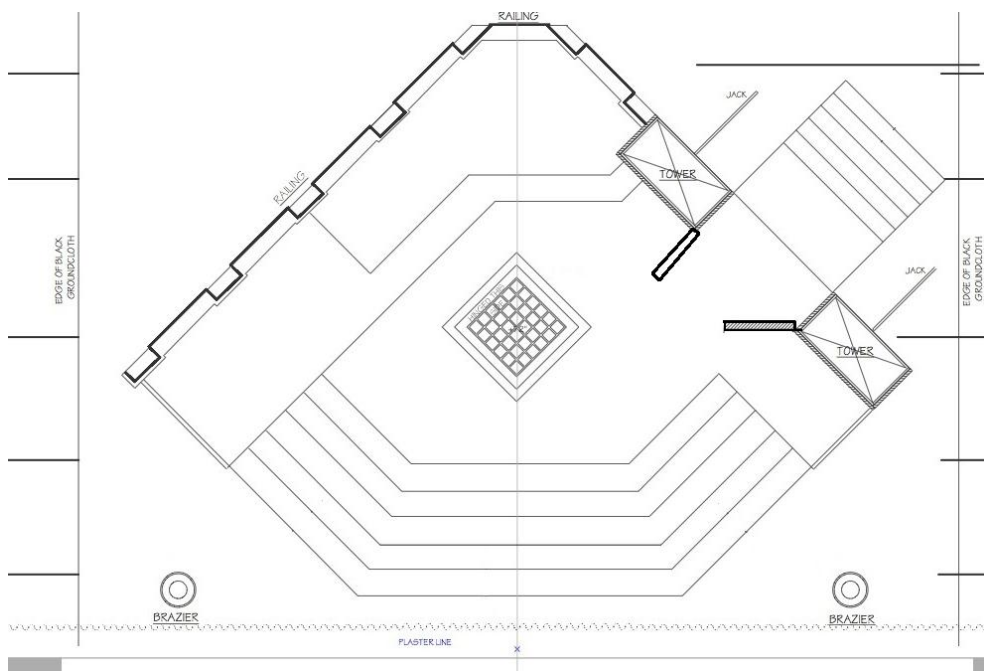




TOP of SHOW PRESET

All Borders and Legs at Show Trim
 US BOC [LS 92] IN
 US RP [LS 73] IN
 Moon [LS 69] IN
 Black Scrim [LS 63] IN
 Cistern Grate Closed and "Locked"
 2 Large SL doors Open [See Diagram]

NOTE: PBO did NOT use the Sky Scrim



00:00 Main Curtain OUT
 5/1/1

102:00 Main Curtain IN / OUT / IN [For Bows]
 203/4/3



LINE SET SCHEDULE

PIPE	Position	USE	TRIM	NOTES	HOUSE HANG
	0'0"				Plaster Line
	0'6"	House Hard Portal	37'0"	To Top of Surtitle Screen & 28'0" L&R of CTR	Fire Curtain
	1'9"	House Valance	27'0"		House Valance
	2'3"				Concert Lighting #1 Mini Strip
	3'3"				House Curtain
1	4'3"	#1 Black Border	26'10"		#1 Border
2	4'9"	#1 Black Legs		24'0"SL and 25'0" SR off CTR	#1 Legs 23'0" L&R of CTR
3	5'3"	LX #1	30'1"	Trim to Instrument Lens	
4	5'9"				
5	6'3"				
6	6'9"				
7	7'3"				
8	7'9"	LX #2	35'9"	Trim to Instrument Lens	
	8'9"				Concert Ceiling #1
9	9'9"				
10	10'3"				
11	10'9"	#2 Black Border	30'0"		
12	11'3"	#2 Black Legs		24'0"SL and 25'0" SR off CTR	
13	11'9"				
14	12'3"				#3 Border
15	12'9"				#2 Legs 23'0" L of CTR
16	13'3"				#2 Legs 23'0" R of CTR
17	13'9"				
18	14'3"	LX #3	35'9"	Trim to Instrument Lens	
19	14'9"				
20	15'3"				Concert Lighting #2 Mini Strip
21	15'9"				
22	16'3"				
23	16'9"				
24	17'3"				
25	17'9"	#3 Black Border	30'0"		
26	18'3"	#3 Black Legs		21'8"SL and 25'0" SR off CTR	
27	18'9"				
28	19'3"				



LINE SET SCHEDULE [continued]

PIPE	Position	USE	TRIM	NOTES	HOUSE HANG
29	19'9"				
30	20'3"				#3 Border
31	20'9"				#3 Legs 23'0" L&R of CTR
	21'9"				Concert Ceiling #2
32	22'9"	LX #4	35'9"	Trim to Instrument Lens	
33	23'3"				
34	23'9"				
35	24'3"				
36	24'9"				
37	25'3"				
38	25'9"				
39	26'3"				
40	26'9"	#4 Black Border	30'0"		
41	27'3"	#4 Black Legs		24'4"SL and 25'0" SR off CTR	
42	27'9"				Black Out Curtain
43	28'3"				Concert Lighting #3 Mini Strip
44	28'9"				#4 Border
45	29'3"				#4 Legs 23'0" L&R of CTR
46	29'9"				
47	30'3"				
48	30'9"	LX #5	35'9"	Trim to Instrument Lens	
49	31'3"				
50	31'9"				
51	32'3"				Black Scrim
52	32'9"				House RP
53	33'3"	#5 Black Legs		24'0"SL and 25'0" SR off CTR	
54	33'9"	#5A Black Legs		10'3" SL off CTR	
	34'9"				Concert Ceiling #3
55	35'9"	LX # 6	38'6"	Trim to Instrument Lens	
56	36'3"				#5 Border
57	36'9"				#5 Legs 23'0" L&R of CTR
58	37'3"	#5 Black Border	30'0"		
59	37'9"				



LINE SET SCHEDULE [continued]

PIPE	Position	USE	TRIM	NOTES	HOUSE HANG
60	38'3"	LX #7	35'4"	Trim to Instrument Lens	
61	38'9"				Far Cyc 4'0" spacing (4 lamp units)
62	39'3"				
63	39'9"	Sky Scrim	0'0"	CTR 8'0"to SR	
64	40'3"				
65	40'9"				
66	41'3"				Concert Lighting #4 Mini Strip
67	41'9"				
68	42'3"				
69	42'9"	Moon	TBD		
70	43'3"				
71	43'9"				#6 Border
72	44'3"				#6 Legs 23'0" L&R of CTR
73	44'9"	White Rp Screen		On CTR	House RP (alternate location)
74	45'3"				
75	45'9"				Black Out Cutrain
76	46'3"				
77	46'9"				
	47'9"				Concert Ceiling #4
79	49'3"				
80	49'9"				
81	50'3"				
82	50'9"				
83	51'3"				
84	51'9"				
85	52'3"				
86	52'9"				
87	53'3"	LX #8	38'0"	Trim to Instrument Lens	Black Scrim Storage
88	53'9"				Tab Storage
89	54'3"				Bounce Storage
90	54'9"				Border Storage
91	55'3"				Concert Scrim Pipe
92	55'9"	Black-Out Drop		On CTR	Leg Storage





#	PROP	NOTES
2	Gold Stools	w/ Upholstered padding
4	Carpets	2'x3', 2'6"x3', 3'x4', 2'x6'
2	Gold Braziers	Silk Frames; Wired for board control; Top - 18"x18", Base - 8"x20"
1	Queen's Chaise w/ Gold Pillow	28"x61"x32"
1	King's Throne w/ 2 Gold Pillows	30"x36"x44", Seat 22"h
2	Red-Feather Fans w/ Poles	Fans - 5'6"x24", Poles - 40"
1	Small Side Table	
4	Spears	Brown w/ gold tips; 9'
2	Practical Torches	Gam; 21"x1 3/4 "
1	Gold Pitcher	15"
5	Gold Goblets	Plastic & Jeweled; 4"x5"
1	Gold Goblet	Pewter painted gold; 3"x7"
1	Gold Bowl	6"x2 1/2"
2	Metal Bowls	Painted Silver; 18"x6"; one w/ blood, one w/out
1	Silver Fruit Bowl	w/ Fake Fruit
2	Executioner Swords	Scimitars; 35 1/2"x5", one w/ blood, one w/out
1	Pair of Wrist Shackles	Leather
1	Pair of Ankle Shackles	Leather
1	Set of Shackle Chains	Plastic & Metal (for sound), 15' (attaches to cistern)





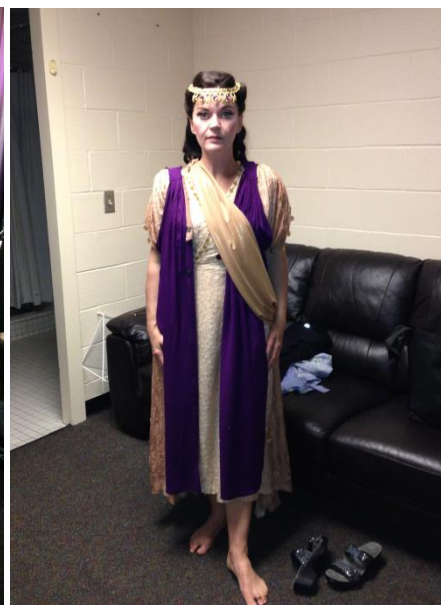
HEROD

gold silk under robe
beaded velvet tabard
purple silk cape
gold floral head piece
sandals not included



HERODIAS

magenta pleated silk caftan
gold plate tabard
gold head dress and earrings



SALOME

pleated dress w/gold rings
gold head piece
assorted veils
barefoot
beaded bra
beaded wrap



NARRABOTH

armor body suit with skirt
black cape with gold trim
gold armor belt
wrist bands
sandals



CAPPODOCIAN

black striped raw silk robe
red and gold striped sash
fez with turban head dress
sandals not included



JOKANAAN

dance belt with gauze
covering
silver wrist bands
silver belt with d-rings





1st JEW
 muslin under robe
 gold silk over robe
 gold brocade tabard
 gold metallic sash
 head dress
 sandals not included



2nd JEW
 striped linen under robe
 rust silk over robe
 head dress
 sandals not included



3rd JEW
 muslin under robe
 brown seersucker over robe
 striped cotton jacket
 head dress
 sandals not included



4th JEW
 lichen gray rayon robe
 brown striped over robe
 head dress
 sandals not included



5th JEW
 muslin under robe
 raw silk over robe
 head dress
 sandals not included



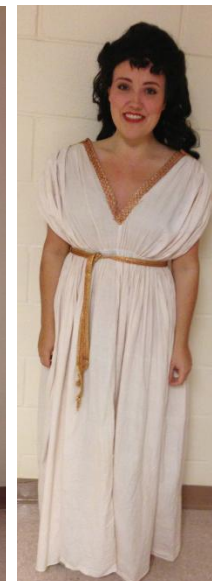
PAGE
 yellow tunic
 yellow trousers
 rust metallic tabard
 gold silk neck plate
 embroidered gold sash
 shoes not included



1st NAZARENE
 white robe trimmed with gold
 white cotton under robe
 white pill box hat
 sandals not included



2nd NAZARENE
 white striped caftan
 white cotton under robe
 white pill box hat
 sandals not included



SINGING SLAVE
 white muslin dress
 gold trim & belt
 barefoot

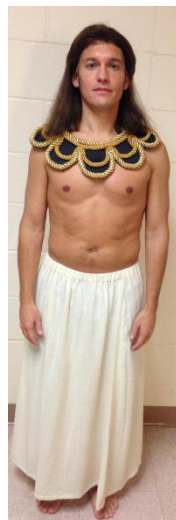




EGYPTIAN SLAVE
 dance belt
 loincloth
 barefoot



HOUSE SLAVES [2]
 dance belt
 cream loincloth
 barefoot



BOY SLAVES [2]
 gold neck plate
 cream gauze skirt
 barefoot



EXECUTIONER
 gold harness with skirt tabs
 gold helmet
 gold wrist bands
 barefoot



SOLDIERS [4]
 black skirt
 leather tabs
 leather armour
 leather wrist bands
 sandals



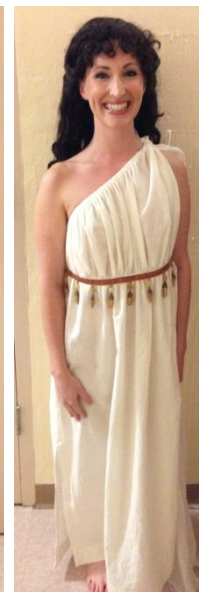
ROMAN MAN
 silk robe with
 attached shawl
 sandals not included



ROMAN LADY
 brown pleated dress
 attached silk shawl
 gold head dress
 sandals not included



ROMAN GIRL
 [2] blue grey rayon and
 embroidered silk dress
 gold headband
 sandals not included



HANDMAIDENS [2]
 cream gauze dress
 gold trim
 barefoot

