

PALM BEACH OPERA

ENEMIES, A LOVE STORY

Rental Information

Music by **Ben Moore**

Libretto by **Nahma Sandrow**

Based on the book by **Isaac Beshavis Singer**

Royalty negotiated directly with Composer

An opera performed in two acts sung in English

World premiere performances at Palm Beach Opera on February 20, 21, 22, 2015

Conductor:

David Stern

Stage Director:

Sam Helfrich

Set Designer:

Allen Moyer

Costume Designer:

Kaye Voyce

Lighting Designer:

Aaron Black

Projections Designer:

Greg Emetaz

Hair & Make-up Designer:

Kathy Waszkelewicz

1st Refusal or \$2,000 royalty

10% royalty/\$2,500minimum

10% royalty/\$2,500minimum

Designed for **Palm Beach Opera**

Scenery built & painted by Center Line Studios, Inc. & San Diego Opera Scenic Studio [2015]

Supertitles by **Palm Beach Opera**

CONTACT

PLEASE DIRECT RENTAL INQUIRIES TO:

Scott Guzielek

Director of Artistic Operations

561-835-7553

sguzielek@pbopera.org

PALM BEACH OPERA

415 S. Olive Avenue, West Palm Beach, FL 33401 main: 561-833-3709 fax: 561-833-8294

www.pbopera.org

TECHNICAL INFORMATION

Number of Trucks **3 – 53'** [rail shipment not permitted]

Number of Sets **1** includes:

- 3 Full Apartments, 1 Detachable Bedroom
- Brick Wall & Legs
- Show Portal
- Tracked Deck
- Phone Booth & Pallet w/ manual operation automation
- Zoo Hanger
- Banquet Table

Video Wall was used in this production and is not part of the rental package. Production can be adapted to not include video wall. Specific contact information and technical specifications can be provided.

Stage Dimensions [WxHxD] **78' x 32' x 33'** [onstage] **120' x 72' x 33'** [total]

Line Sets **19** [2-Scenery, 9-Masking (not included), 8-electrics]

Fly Height **60'**

Technical Supervisor Required for Load-In & Strike

Renter provides: Fee, Housing, Transportation & Per Diem

Wardrobe Supervisor Required for Principal Fittings/Alterations

Renter provides: Fee, Housing, Transportation & Per Diem

CREW REQUIREMENTS*

DEPARTMENT	LOAD-IN	RUN	NOTES
Carpenters	TBD	TBD	
Electricians	TBD	TBD	
Props	TBD	TBD	
Fly-men	TBD	TBD	
Loaders	TBD	TBD	
Pushers	TBD	TBD	

AVAILABLE COSTUMES

ROLE	WOMEN	MEN
Principals	14	4
Chorus	26	19
Extra Looks	—	—
[jewelry not included]		
[period shoes & tuxedos negotiable]		

***Final Crew numbers forthcoming pending review**

PRODUCTION NOTES

PERFORMANCE TIMINGS

Act 1: 1:21:00

Act 2: 1:03:00

Total running time: 2:24:00

*One intermission of length to be determined by renting company

CAST INFORMATION

ROLE	CHARACTER DESCRIPTION	VOICE TYPE
Herman Broder	Writer and intellectual, around 40, Polish Jewish refugee	Baritone
Masha	Vivacious mistress, late 20's/early 30's, Polish Jewish refugee	Soprano
Yadwiga	Current wife, Polish Christian, illiterate, farmer's daughter	Soprano
Tamara	First wife, close to 40, Polish Jewish refugee	Mezzo soprano
Rabbi Lampert	American born, hires Herman to write for him	Bass-baritone
Shifrah Puah	Masha's mother	Mezzo soprano
Tortshiner	Masha's husband, scientist, Polish Jewish refugee	Bass baritone
Nissen	Tamara's uncle	Tenor
Sheva Haddas	Tamara's aunt	Soprano
Leah	Yadwiga's nosy neighbor	Mezzo soprano
Hannah	Yadwiga's nosy neighbor	Soprano

ORCHESTRA and CHORUS

Orchestration*:

1 Flute; 2 Oboes (1 doubling with English horn); 2 Clarinets in Bb; 2 Bassoons;

2 French horns in F; 1 Trumpet in Bb;

2 Percussionists (tympani, glockenspiel and a standard drum set);

1 Harp; 1 Piano;

String Section (8 Violin I, 6 Violin II, 4 Viola, 4 Cello, 3 Bass)

*Reduced orchestration possible

Note: Composer owns orchestral parts

Chorus*: 28 Total; 14 Male Chorus; 14 Female Chorus

*Reduced chorus possible

PRODUCTION PHOTOS

Yadwiga's Apartment (Brooklyn)



Brooklyn apartment has detachable bedroom as shown above

PRODUCTION PHOTOS

Masha's Apartment (Bronx)



PRODUCTION PHOTOS

Tamara's Apartment (Lower East Side)



PRODUCTION PHOTOS



PRODUCTION PHOTOS

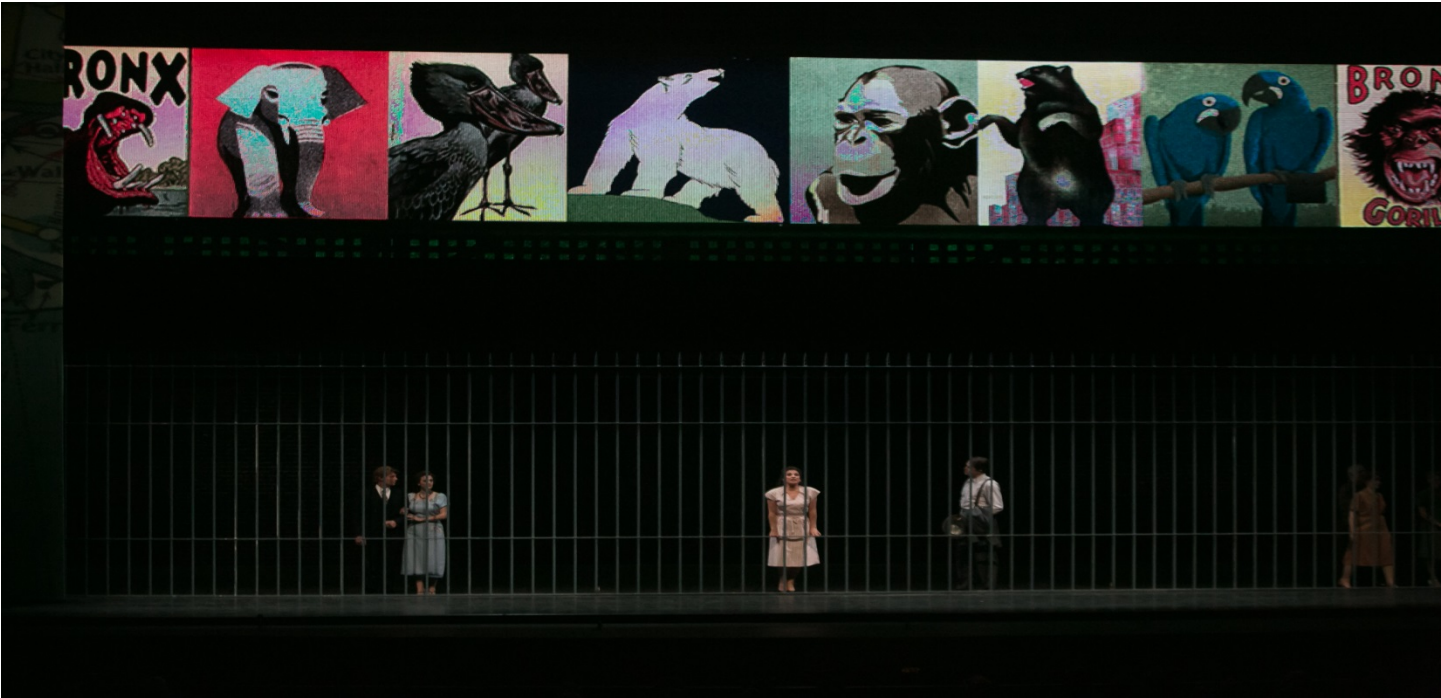


Rabbi Lampert's party (with Chorus)



PRODUCTION PHOTOS

Bronx Zoo Scene



Tortshiner Cafeteria Scene



PRODUCTION PHOTOS

Phone Booth (On Tracked platform from SR)



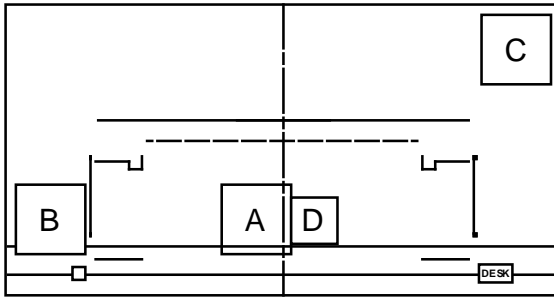
Rabbi Lampert's Office (On Tracked platform from SL)



APARTMENT FLOW

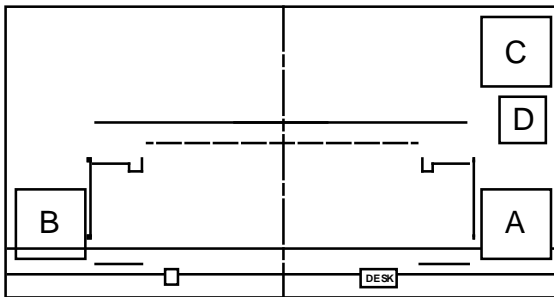
ACT ONE

SCENE 1 (libretto p.4)



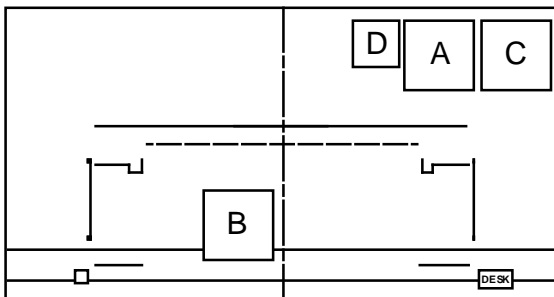
ONSTAGE: Brooklyn , Bedroom
 ONSTAGE: UC Wall Closed
 OFF DSR: Phone Booth (on track 2)
 OFF SR: Bronx (on track 3)
 OFF USL: Lower East Side
 OFF DSL: Pallet w/ Desk (on track 1)

SCENE 2 (libretto p.7)



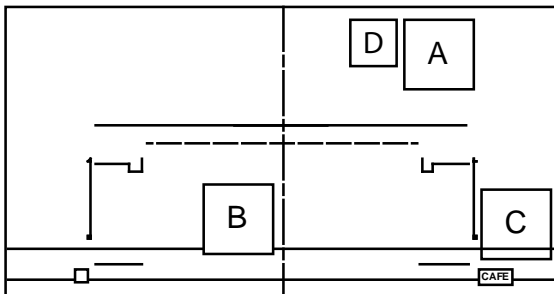
ONSTAGE: Brooklyn, Bedroom
 ONSTAGE: UC Wall Closed
 NT DSR: Phone Booth
 OFF SR: Bronx (on track 3)
 OFF USL: Lower East Side
 NT DSL: Pallet w/ Desk

SCENE 3 (libretto p.9)



ONSTAGE: UC Wall Closed
 XT DSR: Phone Booth
 NT SR: Bronx
 OFF USL: Lower East Side (prep on track 3)
 XT SL: Brooklyn , Bedroom (detach, stow BOTH)
 XT DSL: Pallet w/ Desk (stow Desk; set Cafe Tbl)

SCENE 4 (libretto p.15)



ONSTAGE: Bronx
 ONSTAGE: UC Wall Closed
 OFF DSR: Phone Booth (on track 2)
 OFF USL: Bedroom
 OFF USL: Brooklyn (prep to SL)
 OFF SL: Lower East Side (on track 3)
 OFF DSL: Pallet w/ Cafe Tbl (on track 1)

Location Key:

A = Brooklyn

B = Bronx

C = Lower East Side

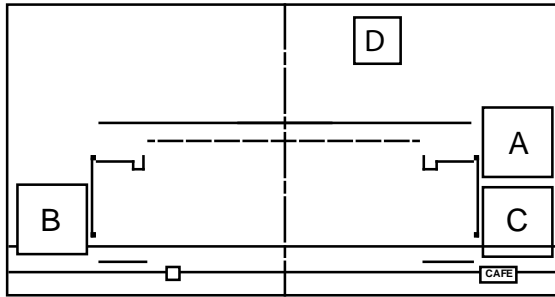
D = Brooklyn Bedroom

APARTMENT FLOW

ACT ONE cont...

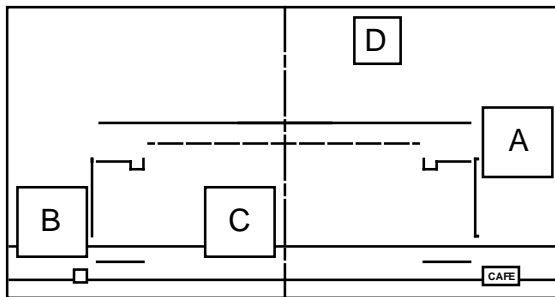
SCENE 5
(libretto p.17)

"Street"



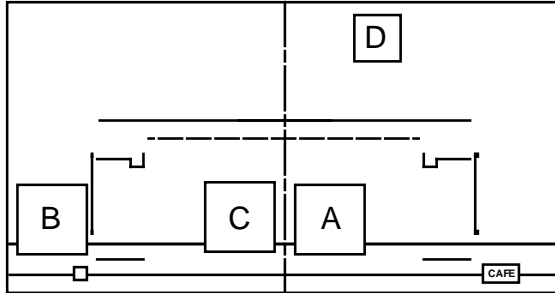
ONSTAGE: UC Wall Closed
 XT SR: BRONX
 NT DSR: Phone Booth
 OFF USL: Bedroom
 OFF SL: Brooklyn
 OFF SL: Lower East Side (on track 3)
 OFF DSL: Pallet w/ Cafe Tbl (on track 1)

SCENE 6
(libretto p.17)



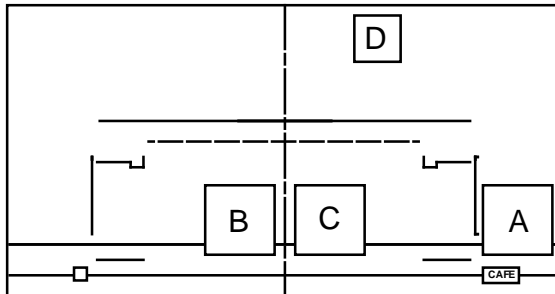
ONSTAGE: UC Wall Closed
 XT DSR: Phone Booth
 OFF USL: Bedroom
 NT SL: Lower East Side
 OFF SL: Brooklyn (prep on track 3)
 OFF DSL: Pallet w/ Cafe (on track 1)
 OFF SR: BRONX

SCENE 7
(libretto p.23)



ONSTAGE: UC Wall Closed
 ONSTAGE: Lower East Side
 OFF DSR: Phone Booth (on track 2)
 OFF SR: Bronx (on track 3)
 OFF USL: Bedroom
 NT SL: Brooklyn
 OFF DSL: Pallet w/ Cafe (on track 1)

SCENE 8
(libretto p.25)



ONSTAGE: UC Wall Closed
 ONSTAGE: Lower East Side SHIFT to SL
 OFF DSR: Phone Booth (on track 2)
 NT SR: Bronx
 OFF USL: Bedroom
 XT SL: Brooklyn
 OFF DSL: Pallet w/ Cafe (on track 1)

Location Key:

A = Brooklyn

B = Bronx

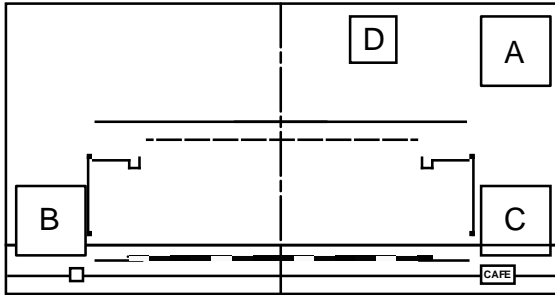
C = Lower East Side

D = Brooklyn Bedroom

APARTMENT FLOW

ACT ONE cont...

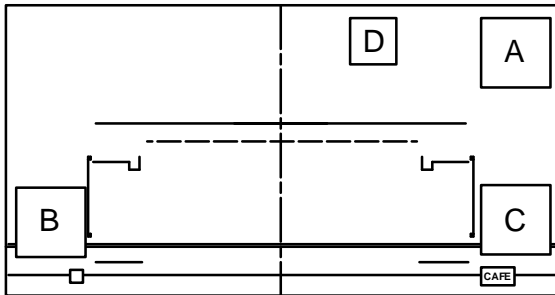
SCENE 9
(libretto p.26)



ONSTAGE: UC Wall Closed
 XT SR: Bronx
 XT SL: LOWER EAST SIDE
 ONSTAGE: Zoo Hanger IN
 OFF DSR: Phone Booth (on track 2)
 OFF USL: Bedroom
 OFF SL: Brooklyn
 OFF DSL: Pallet w/ Cafe (on track 1)

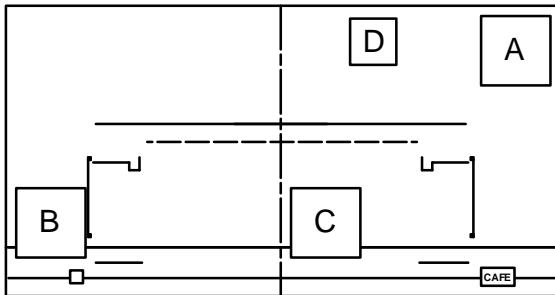
SCENE 10
(libretto p.29)

"Wedding"



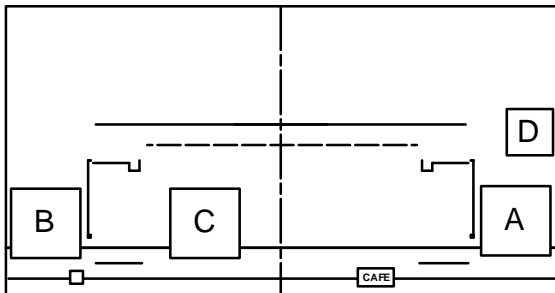
ONSTAGE: UC Wall CLOSED
 ONSTAGE: ZOO HANGER OUT
 OFF USL: Bedroom
 OFF SL: Brooklyn
 OFF DSL: Pallet w/ Cafe (on track 1)
 OFF SL: Lower East Side (on track 3)
 OFF SR: Bronx (on track 3)
 OFF DSR: Telephone (on track 2)

SCENE 11
(libretto p.30)



ONSTAGE: UC Wall Closed
 NT SL: Lower East Side to Center
 OFF USL: Bedroom
 OFF SL: Brooklyn
 OFF SR: Bronx
 OFF DSL: Pallet w/ Cafe (on track 1)
 OFF DSR: Telephone (on track 2)

SCENE 12
(libretto p.35)



ONSTAGE: UC Wall Closed
 ONSTAGE: Lower East Side Shift SR Past Center
 OFF DSR: Telephone (on track 2)
 OFF USL: Bedroom
 OFF SL: Brooklyn
 OFF SR: Bronx
 NT DSL: Pallet w/ Cafe

Location Key:

A = Brooklyn

B = Bronx

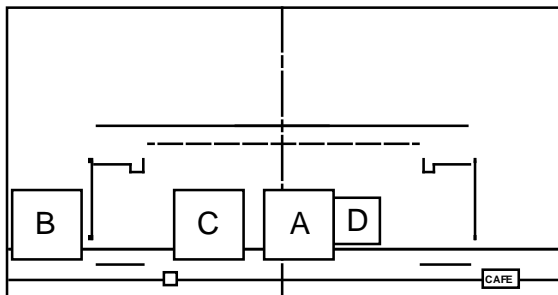
C = Lower East Side

D = Brooklyn Bedroom

APARTMENT FLOW

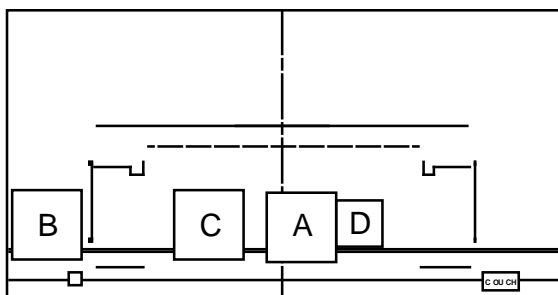
ACT ONE cont...

SCENE 13
(libretto p.36)



ONSTAGE: UC Wall Closed
ONSTAGE: Lower East Side
NT DSR: Phone Booth
NT SL: Brooklyn, Bedroom
OFF SR: Bronx
XT DSL: Pallet w/ Cafe (stow Cafe; set Couch)

SCENE 14
(libretto p.37)



ONSTAGE: UC Wall Closed
ONSTAGE: Lower East Side and Brooklyn ,
Bedroom
XT DSR: Phone Booth
OFF SR: Bronx
OFF DSL: Pallet w/ Couch (on track 1)

END OF ACT ONE
(INTERMISSION)

Location Key:

A = Brooklyn

B = Bronx

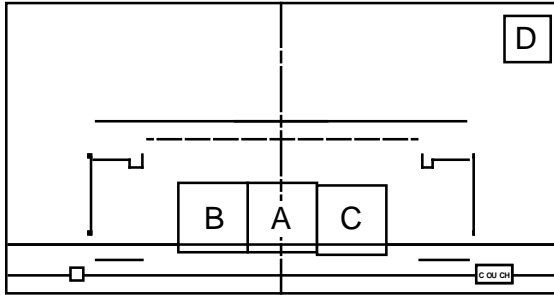
C = Lower East Side

D = Brooklyn Bedroom

APARTMENT FLOW

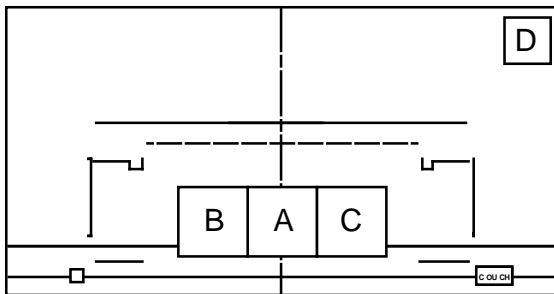
ACT TWO

SCENE 1 (libretto p.40)



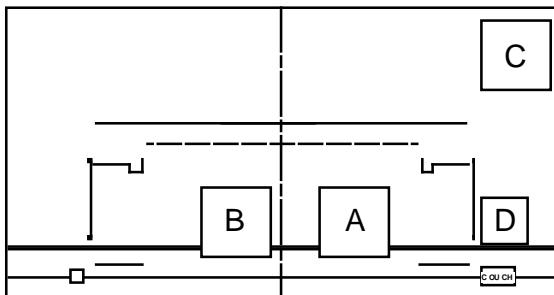
ONSTAGE: UC Wall Closed
ONSTAGE: Bronx, Brooklyn, Lower East Side
OFF DSR: Phone Booth
OFF USL: Bedroom
OFF DSL: Pallet w/ Couch (on track 1)

SCENE 2 (libretto p.42)



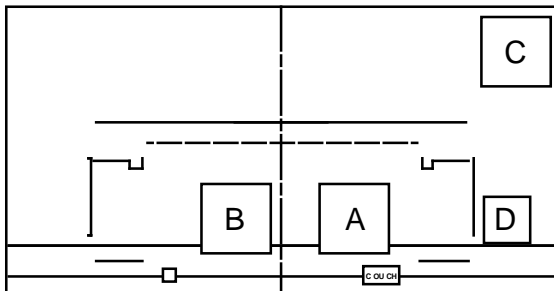
ONSTAGE: UC Wall Closed
ONSTAGE: Bronx, Brooklyn, Lower East Side
OFF DSR: Phone Booth
OFF USL: Bedroom
OFF DSL: Pallet w/ Couch (on track 1)

SCENE 3 (libretto p.46)



ONSTAGE: UC Wall Closed
ONSTAGE: Bronx
ONSTAGE: Brooklyn SHIFT SL
OFF DSR: Phone Booth (on track 2)
OFF USL: Bedroom (prep to SL)
OFF SL: Lower East Side (dead; stow)
OFF DSL: Pallet w/ Couch (on track 1)

SCENE 4 (libretto p.50)



ONSTAGE: UC Wall Closed
ONSTAGE: Bronx, Brooklyn
NT DSR: Phone Booth
OFF USL: Lower East Side
OFF SL: Bedroom
OFF DSL: Pallet w/ Couch

Location Key:

A = Brooklyn

B = Bronx

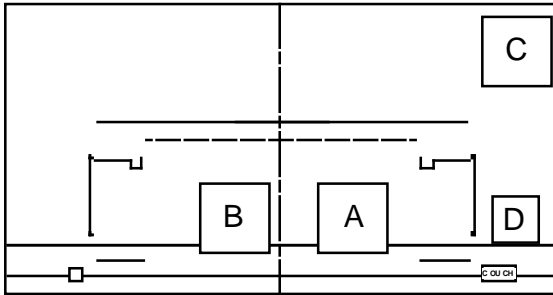
C = Lower East Side

D = Brooklyn Bedroom

APARTMENT FLOW

ACT TWO cont...

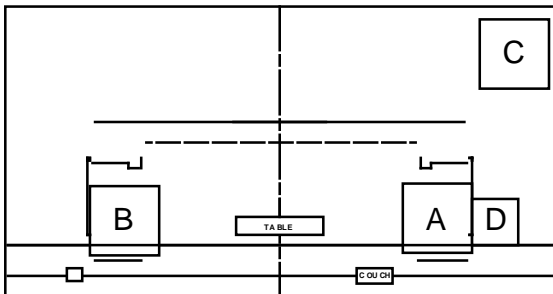
SCENE 5
(libretto p.51)



ONSTAGE: UC Wall Closed
ONSTAGE: Bronx, Brooklyn
XT DSR: Phone Booth
OFF USL: Lower East Side
OFF SL: Bedroom
OFF DSL: Pallet w/ Couch

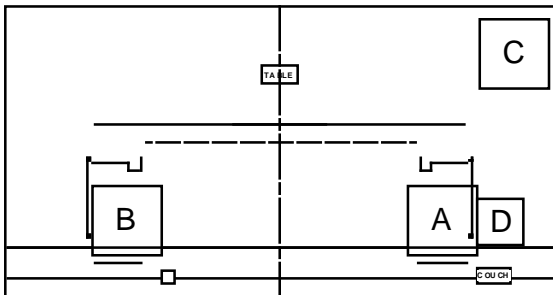
SCENE 6
(libretto p.53)

"Party"



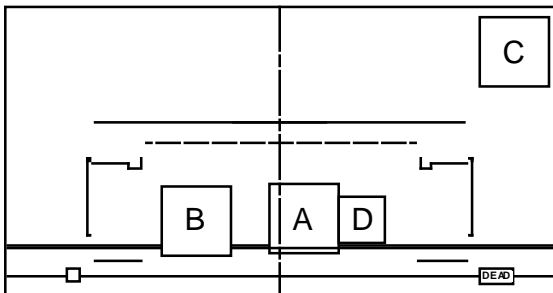
ONSTAGE: UC Wall Opens
NT UC: Wagon w/ Table
ONSTAGE: Bronx SHIFT to SR
OFF DSR: Phone Booth (on track 2)
ONSTAGE: Brooklyn SHIFT to SL
OFF USL: Lower East Side
OFF SL: Bedroom (attach to Brooklyn)
NT DSL: Pallet w/ Couch

SCENE 7
(libretto p.58)



XT UC: Wagon w/ Table
ONSTAGE: UC Wall Closes
ONSTAGE: Bronx, Brooklyn
NT DSR: Phone Booth
OFF USL: Lower East Side
NT SL: Bedroom to offstage/onstage (attached)
XT DSL: Pallet w/ Couch

SCENE 8^{*}
(libretto p.58)



ONSTAGE: UC Wall Closed
ONSTAGE: Bronx, Brooklyn SHIFT to Center
XT DSR: Phone Booth
OFF USL: Lower East Side
NT SL: Bedroom
OFF DSL: Pallet w/ Couch (dead)

Location Key:

A = Brooklyn

B = Bronx

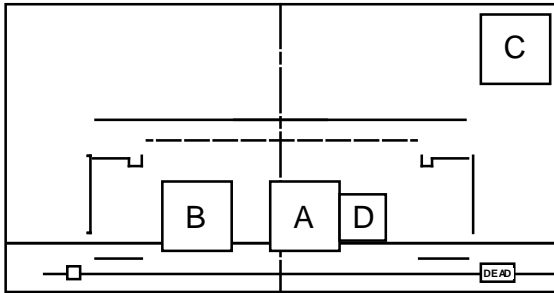
C = Lower East Side

D = Brooklyn Bedroom

APARTMENT FLOW

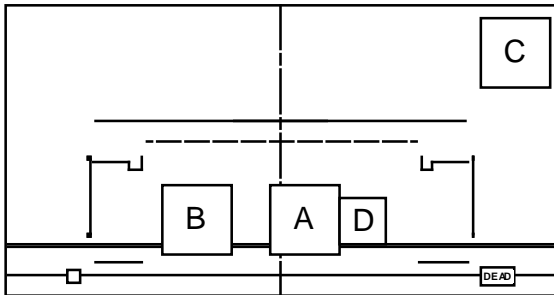
ACT TWO cont...

SCENE 9 *
(libretto p.59)



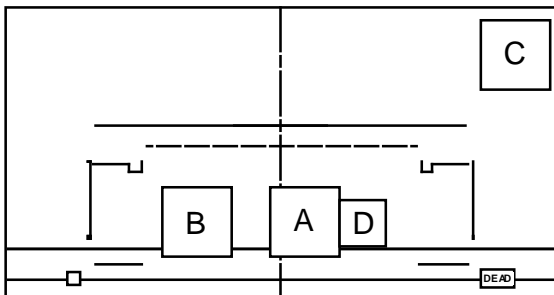
ONSTAGE: UC Wall Closed
ONSTAGE: Bronx, Brooklyn, Bedroom
OFF DSR: Phone Booth (dead)
OFF USL: Lower East Side
OFF DSL: Pallet w/ Cafe

SCENE 10 *
(libretto p.62)



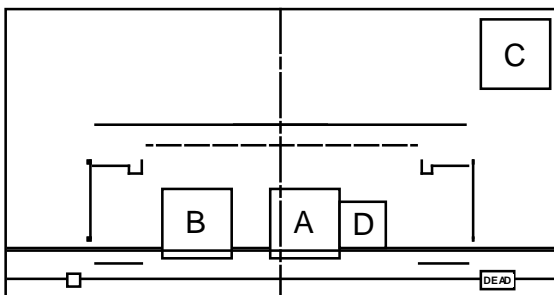
ONSTAGE: UC Wall Closed
ONSTAGE: Bronx, Brooklyn, Bedroom
OFF DSR: Phone Booth
OFF USL: Lower East Side
OFF DSL: Pallet w/ Cafe

SCENE 11 *
(libretto p.64)



ONSTAGE: UC Wall Closed
ONSTAGE: Bronx, Brooklyn, Bedroom
OFF DSR: Phone Booth
OFF USL: Lower East Side
OFF DSL: Pallet w/ Cafe

SCENE 12 *
(libretto p.64)



ONSTAGE: UC Wall Closed
ONSTAGE: Brooklyn, Bedroom, Bronx
OFF DSR: Phone Booth
OFF USL: Lower East Side
OFF DSL: Pallet w/ Cafe

END OF OPERA

Location Key:

A = Brooklyn

B = Bronx

C = Lower East Side

D = Brooklyn Bedroom

LINESET SCHEDULE

PIPE	Position	USE	TRIM	NOTES	House Hang
	00'-00"	PLASTER/SETTING LINE			
	00'-06"	Proscenium Header @ 24'-0" to Title Screen Bottom/Tormenters @ 25'-00" L&R of CL			Fire Curtain
	01'-09"	House Red Valance	Out	Not Used	House Valance
	02'-03"				Concert Lighting #1
Mtr	03'-03"	House Red Main Curtain	Out	Not Used	House Curtain
1	04'-03"	Show Curtain and Legs	Works	w/12' Leg Extensions to 76'-00"	#1 Border
2	04'-09"	Blackout Drop	Works	Full Stage (66'-0") Blackout Drop w/Ext.	#1 Legs - 23' L&R of C
3	05'-03"				
4	05'-09"				
5	06'-03"	Show Portal	Deck		
6	06'-09"	Show Portal Helper	Deck	Married to LS4 • Est Wt 2,400 lbs.	
7	07'-03"				
8	07'-09"	#1 Electric	32'-08"	To Pipe	
	08'-09"				Concert Ceiling #1
9	09'-09"	Zoo Hanger	Works		
10	10'-03"				
11	10'-09"	#1A Electric	37'-07"	To Pipe	
12	11'-03"				
13	11'-09"				
14	12'-03"				#2 Border
15	12'-09"				#2 Legs - 23' L of C
16	13'-03"				#2 Legs - 23' R of C
17	13'-09"				
18	14'-03"				
19	14'-09"				
20	15'-03"				Concert Lighting #2
21	15'-09"	#1 Black Border	32'-06"	Stage Floor to Bottom Hem	
22	16'-03"				
23	16'-09"	#2 Electric	36'-00"	To Pipe	
24	17'-03"				
25	17'-09"				
26	18'-03"				
27	18'-09"				
28	19'-03"				
29	19'-09"				
30	20'-03"				#3 Border
31	20'-09"				#3 Legs - 23' L&R of C
	21'-09"				Concert Ceiling #2
32	22'-09"				
33	23'-03"				
34	23'-9"				
35	24'-03"	#2 Black Border	32'-06"	Stage Floor to Bottom Hem	

PIPE	Position	USE	TRIM	NOTES	House Hang
36	24'-09"				
37	25'-03"	#3 Electric	36'-00"	To Pipe	
38	25'-09"				
39	26'-03"				
40	26'-09"	Brick Les L	Floor	Onstage End 29'-0" L&R of Ctr	
41	27'-03"	Brick Leg R	Floor	Onstage End 29'-0" L&R of Ctr	Black Out Curtain
42	27'-09"	Black 6' Tabs L&R	Floor		
43	28'-03"				Concert Lighting #3
44	28'-09"				#4 Border
45	29'-03"				#4 Legs - 23' L&R of C
46	29'-09"				
47	30'-03"	#3 Black Border	32'-06"	Stage Floor to Bottom Hem	
48	30'-09"	Video Wall on 6 Chain Motors (Pete's) Spotted Between these Pipes	16'-00"	Do Not Use	
49	31'-03"		16'-00"	Do Not Use	
50	31'-09"	#3A Black Border	16'-00"	Mask Video Wall Back	
51	32'-03"				Black Scrim
52	32'-09"				House RP
53	33'-03"				
54	33'-09"				
	34'-09"				Concert Ceiling #3
55	35'-09"	#4 Black Border	32'-06"	Stage Floor to Bottom Hem	
56	36'-03"	Center Pick-Up for Brick Wall Door Header			#5 Border
57	36'-09"				#5 Legs - 23' L&R of C
58	37'-03"				
59	37'-09"	Black Legs	Floor	Onstage End 29'-0" L&R of Ctr (9'-0")	
60	38'-03"				
61	38'-09"	Black Scrim	Floor		Far Cyc - 4'-0"/4 Lamp (2 top, 2 bot)
62	39'-03"				
63	39'-09"				
64	40'-03"				
65	40'-09"	#4 Electric	38'-09"	To Pipe	
66	41'-03"				Concert Lighting #4
67	41'-09"	US Black Out Drop	Floor		
68	42'-03"				
69	42'-09"				
70	43'-03"				
71	43'-09"				#6 Border
72	44'-03"				#6 Legs - 23' L&R of C
73	44'-09"				House RP (alt.location)
74	45'-03"				
75	45'-09"				Black Out Curtain

PROP RENTAL INVENTORY

BROOKLYN

Main Unit

Kitchen Sink with counter
Faucet
Fridge
Small counter
Kitchen Table
3 Chairs
Small table (for phone)
Stove with 4 burners and backsplash
2 Overhead cabinets
Bathroom Sink with pedestal
Bathroom Faucet
Bathroom Mirror
Bathroom towel rack

Lighting

Ceiling Fixture (Kitchen)
Ceiling Fixture (Bedroom)
2 Sconces (Bathroom)
2 matching lamps (for top of dresser)
Lamp with shade (secure to wall with wire)

Hand Props

Brown Tea Box
Telephone
White and Gold Vase
Tea Pot (short Blue and white)
2 Coffee Cups w/ Saucers (autumnal)
2 Plates, Fork, Napkins (autumnal)
Butter Knife
Dinner plate for Rolls (autumnal)
2 Striped hand towels
Creamer (autumnal)
Butter Dish
Glass Water Pitcher
6 Forks, Napkins, Dessert Plates
3 Knives, Spoons
3 Teacups and Saucers
2 Hanukkah Candles (Taper, Cut to fit)
Menorah
Small Box of Matches
Bouquet of Daffodils
Bouquet of Pink Roses
Bouquet of Autumn Flowers
Bouquet of Hydrangeas
Canvas Shopping bag

Bedroom

Headboard/footboard
Mattress
Box spring
Rug
2 Flat sheets
Red Blanket
2 pillows
2 pillowcases
Side Table
Doily for Side Table
Chair
Knitting basket
Wardrobe/Dresser
2 matching doilies-6 circles/triangle shaped (for top of dresser)
2 picture frames w/ flowers
Jewelry box with mirror
Hair brush
Heater

Main Unit Dressing

Valance and Curtain (yellow)
Curtain Rods
Radiator Cover
Dish drying rack
3 white pots
1 double boiler
Bunt pan
2 water glasses
Frying pan w/ lid
Percolator
Toaster (pop up style)
3 green canisters
4 hangable hot pads
Hanger for hot pads (fruit decorations) 4 hooks
Wall hanger for cooking utensils (7 hooks)
7 cooking utensils including spatula style tongs for potato pancakes
Spice rack with spices
Hive shaped object for dressing
Ceiling Fixture
White trash can
Fire Extinguisher (on wall in hallway)
Large Mirror (on wall in hallway)
Coat rack (on wall in hallway)

PROP RENTAL INVENTORY

BRONX

Main Unit

Hutch
Sink (with PVC "metal pipe" to be attached)
Faucet
Stove
Hall Tree
Kitchen Table
3 matching chairs
Fridge
Floor Lamp
Upholstered chair
Side table /Magazine rack
Radiator (black)

Lighting

Wall sconce SR of doorway (near fridge)
Wall sconce on SL wall between hutch and US wall
Ceiling Fixture (bare bulb)
Floor lamp with glass shade (secured to floor via wire screwed to floor that crosses over the base)
Small lamp with fancy light blue shade (Hall Tree)

Hand Props

Black Prayer Book
1 Tea cup and Saucer
Metal Water Pitcher
Glass Vase
2 Rocks Glasses
Whiskey Decanter with cork
2 Ashtrays (1 glass, 1 ceramic)
Pill bottle w/ cork
Wooden Spoon
Large Aluminum Pot
Small Aluminum Pot
Percolator (rounded)
Black shawl to cover Mirror
Hot Pad
Large Blue and White plate (meant for cake)
Telephone (rounded)
3 White and Gold Bowls for Stew
3 Sets Forks Knives Spoons
3 Napkins

Main Unit Dressing

Linoleum printed "rug"
3 Blue Canisters (hutch)
Square Tin plate (hutch)
2 nice bowls stacked within each other (hutch)
Dome container (hutch)
2 serving bowls one with lid (hutch)
Wicker Basket (top of hutch)
More than 12 mason jars filled w/ food (shelf)
More than 7 canned goods (shelf)
Oats container
Red Bean bag
Electric fan (non-working)
Stack of white & gold plates
Stack of white & gold saucers
Stack of white & gold bowls (small)
8 tea cups
White & gold tea pot
3 white & gold large containers
Hook above sink
White Yellow and Brown Dish rag (to be hung above sink)
Hanging soap holder (to be hung to the left of the sink)
Hand soap can
Broom
Metal Bucket
Pink Trash can
Flour sifter
Colander
2 white shakers (top of stove)
Small jar (top of stove)
6 Large Blue and White Canisters (above Stove)
5 Small Blue and White Canisters (above Stove)
4 Tins of spices (above Stove)
Tin of coffee (above Stove)
Jewish dust pan (above Stove)
Toaster (above Stove)
White lacey curtains on rod
2 green pull down blinds
Cane (Hall tree)
Umbrella (hall tree)
Magazines (about 3)
Books (about 7)
Milk containers (2) (fridge)
Margarine container (fridge)
Glass bottle (fridge)
2 Cans (fridge)
Red and Tan blanket
Square pillow

PROP RENTAL INVENTORY

LOWER EAST SIDE

Main Unit

Radiator (Silver)
Upholstered Red Arm Chair
Two-Tier Side Table
Coffee table
Sofa (Floral)
Sewing Table
Side Chair (Embroidered)
Magazine Stand

Lighting

Small lamp w/ Shade (to be attached with 1 screw into top of side table)
Standing Lamp with large shade
Ceiling Fixture (3 Bulbed)

Hand Props

Hardcover book
Bottle of Vodka
Shot Glass
Silver Tray w/Silver Teapot
2 Teacups and Saucers
Small Plate of Cookies (Matches Plates on LES shelf)

Main Unit Dressing

Rectangle Antimacassar/Doilies for arms of red arm chair
2-3 Sewing Magazines
2 Books
Lacey Curtain
Curtain Rod
2 Red Curtains
Wooden Curtain rod
Large Rug
Doily for Coffee Table
3 Large Oval Picture Frames
Shelf w/ 3 shelves
2 Women Figurines (on shelf)
Small Oval Bowl w/ Flowers (on shelf)
2 Small plates w/ Flowers (on shelf)
Small Oval Bowl Blue and White (on shelf)
2 Pink Glass Candlesticks (on shelf)
2 Clear Glass Double Candlesticks (on shelf)
Small Woman Figurine (on shelf)
1 Small Bud Vase-like item White/Green (on shelf)
1 Small Bud Vase-like item White/Orange (on shelf)
Radio
Square Doily for radio

WORLD PREMIERE CAST

ROLE	PREMIERE CAST	VOICE TYPE
Herman Broder	Daniel Okulitch	Baritone
Masha	Danielle Pastin	Soprano
Yadwiga	Caitlin Lynch	Soprano
Tamara	Leann Sandel-Pantaleo	Mezzo soprano
Rabbi Lampert	David Kravitz	Bass-baritone
Shifrah Puah	Jennifer Roderer	Mezzo soprano
Tortshiner	Philip Horst	Bass baritone
Nissen	Robert Watson*	Tenor
Sheva Haddas	JoAna Rusche*	Soprano
Leah	Rachel Arky*	Mezzo soprano
Hannah	Liana Guberman*	Soprano

*PBO Young Artist

PBO PRODUCTION STAFF

Director of Production:	Greg Hirsch
Director of Artistic Operations:	Scott Guzielek
Company Manager:	Katy Reeves
Orchestra Personnel Manager:	Michael Ellert
Production Stage Manager:	Brett Finley
1 ST Assistant Stage Manager:	Paul J. Sieveking
2 nd Assistant Stage Manager:	Jerry Smith
Assistant Director:	Daniel Ellis
Costume Director:	Meredith Hinton
Production Properties Supervisor:	Julia Sandy
Properties Supervisor:	Alanna Maniscalco
Assistant Scenery Designer:	Warren Karp
Assistant Lighting Designer:	Dan Efros
Assistant Technical Director:	Sean Jeffries
Production Carpenter:	Skip Ford
Production Electrician:	George Benckenstein
Production Flyman:	Jeffrey Whitehead
Production Wardrobe:	Barbara Black

PBO MUSIC STAFF

Associate Conductor & Chorus Master	Greg Ritchey
English Diction Coach	Ben Malensek
Rehearsal Pianists	Timothy Cheung & Irina Nedelcu
